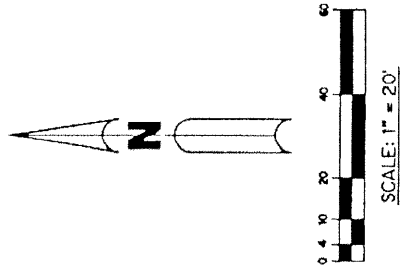


CAMBRIDGE AT ABACOA

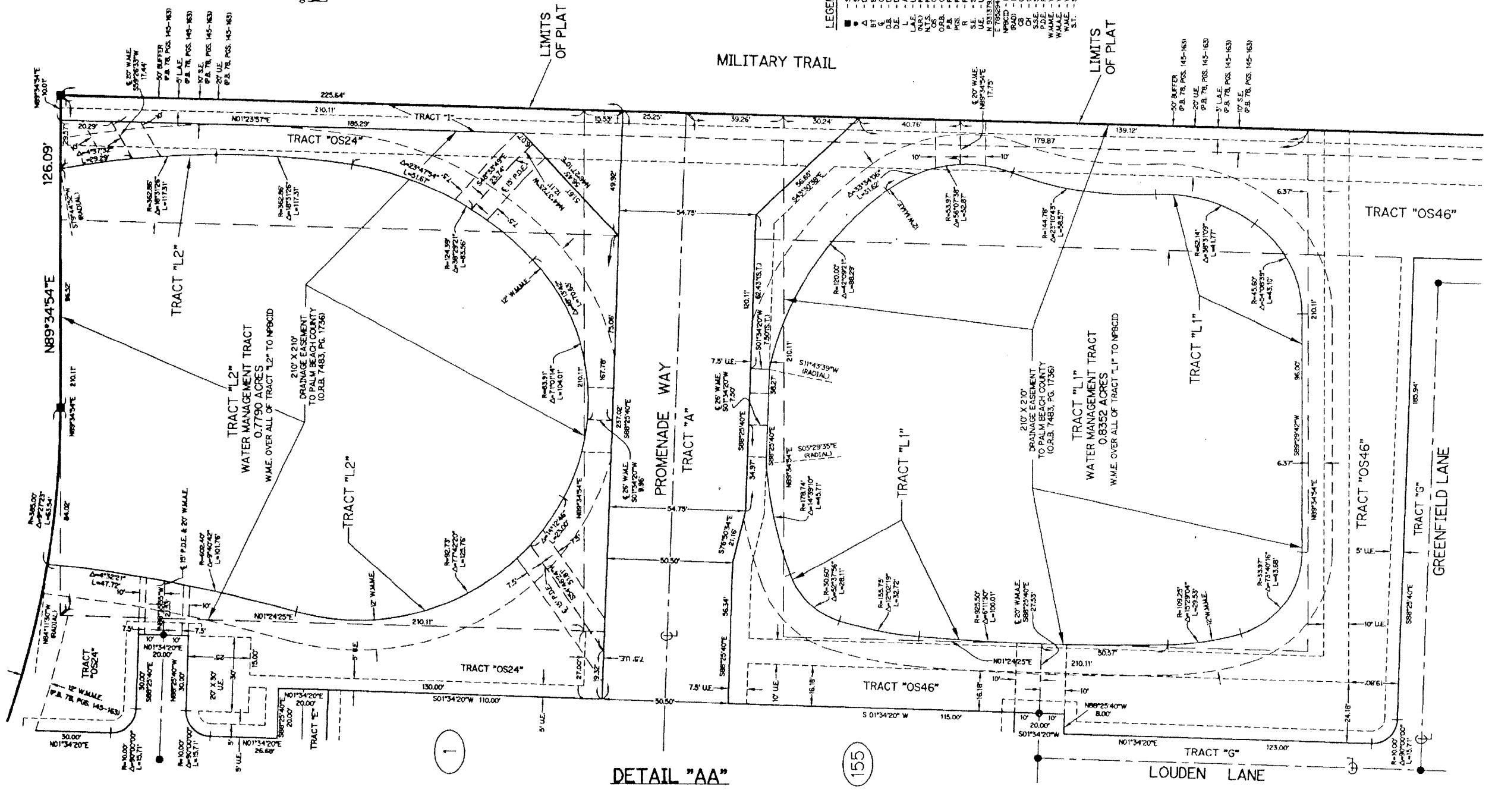
BEING A REPLAT OF ALL OF TRACTS R52, RN6B1 AND RN6B2 ACCORDING TO THE PLAT OF ABACOA PLAT NO. 1,
AS RECORDED IN PLAT BOOK 78, PAGES 145 THROUGH 163 OF THE PUBLIC RECORDS OF PALM BEACH COUNTY, FLORIDA,
LYING IN SECTION 24, TOWNSHIP 41 SOUTH, RANGE 42 EAST, TOWN OF JUPITER, PALM BEACH COUNTY, FLORIDA

SHEET 7 OF 7 JUNE, 2001

THIS INSTRUMENT PREPARED BY
WILBUR F. DIVINE, P.S.M. 4190, STATE OF FLORIDA
LAWSON, NOBLE AND WEBB, INC.
ENGINEERS PLANNERS SURVEYORS
420 COLUMBIA DRIVE, SUITE 110
WEST PALM BEACH, FLORIDA 33409
LB 6674



- LEGEND:
- - SET PERMANENT REFERENCE MONUMENT, PSM #6674
 - - SET PERMANENT CONTROL POINT, PSM #6674
 - Δ - DELTA ANGLE
 - BT - BUFFER TRACT
 - D.B. - DRAINAGE BASIN
 - D.B. - DEED BOOK
 - D.E. - DRAINAGE EASEMENT
 - L. - ARC LENGTH
 - L.A.E. - LIMITED ACCESS EASEMENT
 - M.A.S. - METERS AT SCALE
 - O.S. - OPEN SPACE TRACT
 - P.A. - PLAT RECORD BOOK
 - P.S. - PAGES
 - R - RADIUS
 - R - SIDEWALK EASEMENT
 - S.E. - SETBACK EASEMENT
 - N 10° 13' 18" E 117.75'
 - 50113420' W 110.00'
 - M.F.C.I.D. - NORTH PALM BEACH COUNTY IMPROVEMENT DISTRICT
 - TR 1754 - TR 1754
 - 6674 - 6674
 - CH - CHORD DISTANCE
 - OH - ORIGIN
 - SSSE - SAFE START EASEMENT
 - SD.E. - PUBLIC DRAINAGE EASEMENT
 - W.A.E. - WATER MANAGEMENT ACCESS EASEMENT
 - W.A.E. - WATER MANAGEMENT EASEMENT
 - S.T. - SURVEY TIE



DETAIL "AA"

1

155